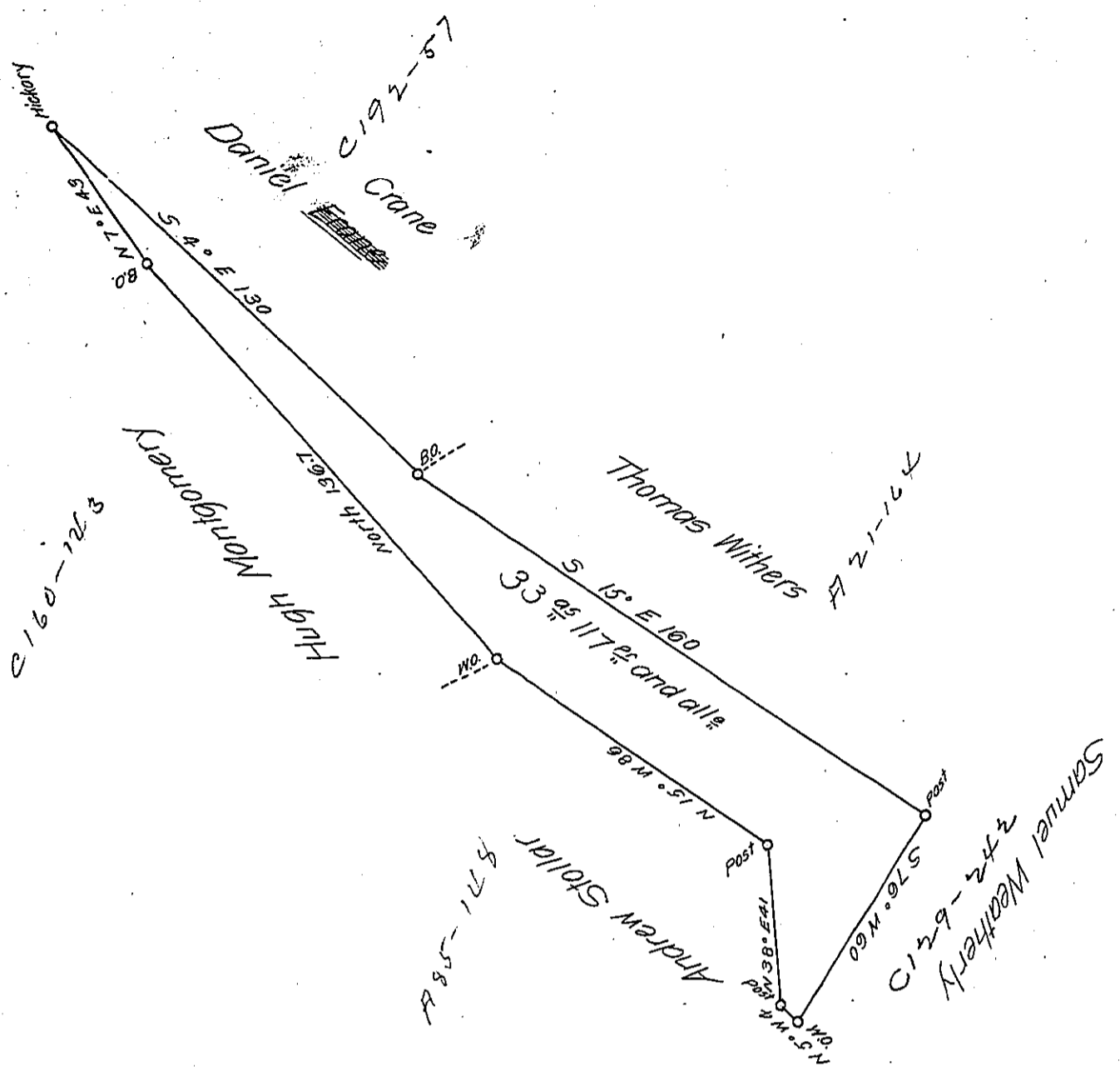


FORM NO. I.



The above is a draught of a survey made March 8<sup>th</sup> 1819 for Hugh Montgomery on a Warrant for six acres dated December 16<sup>th</sup> 1818 Containing thirty three acres and one hundred and seventeen per. together with the usual all<sup>e</sup>. Situate on the waters of Wheeling creek in Findley township Washington county. In the month of February last, there was a small Cabin built, on the land; but has never been occupied. I would further add that I know of no adverse claim.

Jacob Spangler Esq S.G.

James Reed D.S.

IN TESTIMONY that the above is a copy of the original remaining on file in the Department of Internal Affairs of Pennsylvania, made conformably to an Act of Assembly approved the 16th day of February, 1833, I have hereunto set my Hand and caused the Seal of said Department to be affixed at Harrisburg, this fifth day of February 1906

*Loach R. Brown*  
Secretary of Internal Affairs.